

Lake Havasu, AZ



SIERRA SERIES TRANSIT SHELTERS

FUNCTIONAL DESIGN. CLASSIC STYLE. RENOWNED RELIABILITY.

LOCATION

Lake Havasu is in western Arizona close to the Arizona-California border. It's known for being the base for trails in the nearby desert and water sports on Lake Havasu. A popular attraction of the Colorado River, is the London Bridge, which was relocated from England in 1968 by a wealthy American. This area of Lake Havasu sees over 1 million visitors every year and is supported by Lake Havasu City Transit to help people move. Uniquely, the city's transit system states it is not mass transit but rather a custom designed public transit system to fit the transit needs of Lake Havasu City. To that end, they partnerd with Tolar Manufacturing to create bus shelters that fit the customized characteristics of their small but bustling tourist town.

PROJECT SCOPE

Our Sierra Series transit shelters are a client favorite with their classic look and purpose-driven design perfect for transit corridors, pedestrian-friendly downtowns, and busy transportation hubs like that found near the London Bridge in Lake Havasu, Arizona.

Located at the, Bridge Transit Hub, these 17-foot Sierra wide roof dome bus shelters feature a rear screen wall placed in the center midpoint of the shelter to allow for seating on both sides of the shelter depending on the positioning of the piercing Arizona sun.

UL-listed solar powered dusk-to-dawn LED illumination light up waiting passengers for their security and easy bus operator identification. Each shelter includes an 8-foot perforated metal benche with 3 seat delineators.



SIERRA SERIES TRANSIT SHELTERS

ON THE STREETS ACROSS AMERICA

(size and design examples)



DIAMOND BAR, CA

Sierra series bus shelters offer lengths from 9-ft to 24-ft and widths up to 5-ft, 8-in.

17-ft Sierra low peak shelter with aluminum roof panels, mission style perforated rear panels, two UL-listed solar light systems under the roof providing dusk-to-dawn LED illumination, 8-ft expanded metal bench with back rest, and an expanded metal trash receptacle.



BANNING, CA

Perforated walls provide weather protection and visibility.

13-ft Sierra High Peak shelter features stone ground synthetic roof tiles over an aluminum skin, perforated metal rear and half-end walls, dusk-to-dawn solar under-roof LED illumination, and a perforated metal bench with seat delineators and 32 gallon perforated metal trash receptacle with liner.

DENVER, CO

Sierra series shelters take on many looks from contemporary to classic.

17-ft Sierra dome roof transit shelter with two angled single face media display kiosks for better viewing on one-way and wide median streets. Shown with full advertising impact configuration with one advertising client in both display kiosks and rear wall.



IRVINE, CA

Located on the UC Irvine campus, this SmartPlace™ bus shelter provides technological amenities expected by college students.

26-ft Sierra dome roof SmartPlace™ shelter features LCD TV wireless access, emergency call box with notice beacon, closed caption camera, and wire grid contour bench with back rest.



PALM SPRINGS, CA

Sierra bus shelters lend themselves nicely to public art projects.

Three Tolar-built shelters became active public art installations as part of "Desert X" stretching from the Coachella Valley to the Salton Sea.



MEMPHIS, TN

Bright yellow neighborhood-identifying branding includes rectangles reminiscent of equalizer sound bars so important to this historically music-driven city.

Durable Sierra shelter integrating public art into a 13-ft shelter with 8-ft perforated metal bench covered by an important shade-producing low peak roof to keep passengers comfortable while they wait for the bus.



LOS ALAMITOS, CA

Sierra series shelters offer varied roof design options from dome to hip to Mansard, low peak, and high peak.

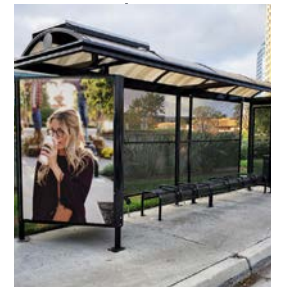
This 13-ft Sierra shelter features a low-peak roof, metal bench with back rest, trash receptacle, and oversize revenue generating advertising display.



CITY OF ORANGE, CA

Sierra bus shelters provide valuable revenue-generating advertising opportunities.

21-ft Sierra Dome Roof bus shelter provides advertising incased in a 48-in V Angle media display kiosk with solar powered LED illumination. Solar also powers the under roof security lighting. Sierra series extrusion and bronze twin wall polycarbonate roof panels are supported by perforated metal walls. Amenities include perforated metal seating with delineators and a perforated metal trash receptacle.



FAIRFIELD, CA

Sierra series provides interchangeable walls to best fit site locations.

13-ft Sierra Dome roof shelter includes a roof extrusion, bronze twin wall polycarbonate roof panels, and perforated metal rear wall protecting an 8-ft perforated metal bench with seat delineators. Side walls are interchangeable to incorporate full or half walls based on the site location.



These styles are representative of product options within this series. Scan the QR code or visit www.tolarmfg.com for additional ideas, options and specifications.

Shelters BRT/Rail Street Furniture Solar Solutions Displays Digital Solutions



SIERRA SERIES TRANSIT SHELTERS

ON THE STREETS ACROSS AMERICA

(size and design examples)

DENVER, CO

Sierra series shelters take on many looks from contemporary to classic.

17-ft Sierra dome roof transit shelter with two angled single face media display kiosks for better viewing on one-way and wide median streets. Shown with full advertising impact configuration with one advertising client in both display kiosks and rear wall.



IRVINE, CA

Located on the UC Irvine campus, this SmartPlace™ bus shelter provides technological amenities expected by college students.

26-ft Sierra dome roof SmartPlace™ shelter features LCD TV wireless access, emergency call box with notice beacon, closed caption camera, and wire grid contour bench with back rest.



DIAMOND BAR, CA

Sierra series bus shelters offer lengths from 9-ft to 24-ft and widths up to 5-ft, 8-in.

17-ft Sierra low peak shelter with aluminum roof panels, mission style perforated rear panels, two UL-listed solar light systems under the roof providing dusk-to-dawn LED illumination, 8-ft expanded metal bench with back rest, and an expanded metal trash receptacle.



MEMPHIS, TN

Bright yellow neighborhood-identifying branding includes rectangles reminiscent of equalizer sound bars so important to this historically music-driven city.

Durable Sierra shelter integrating public art into a 13-ft shelter with 8-ft perforated metal bench covered by an important shade-producing low peak roof to keep passengers comfortable while they wait for the bus.

Shelters BRT/Rail Street Furniture Solar Solutions Displays Digital Solutions

